

**SOPHOS**

Security made simple.

# Sophos SG Series Appliances

## Unleash the full potential of your network

With bandwidth requirements constantly increasing, network security appliances need to do more than ever before. The Sophos SG Series appliances are built to provide optimal performance, versatility and efficiency to meet all your security needs.



# Unleash the full potential of your network

The Sophos SG Series appliances are designed to provide the optimal balance between performance and protection – for diverse IT environments. Whether you need a solution for a small remote office, want to protect your school campus, or are a global organization requiring high-availability and enterprise-grade features, our SG Series appliances are an ideal fit.

## Versatile

### Appliances to suit every environment

Our broad product line-up makes it easier for you to choose the right appliance. A higher model number indicates higher throughput and an increased number of ports or connectivity options.

And as every software subscription is available on every appliance, you can flexibly size the solution to fit your budget and your individual security needs. Next-generation firewall features or all-in-one security on a single box, it's your choice.

## Rapid

### Proven performance on all models

Our appliances are built upon the most advanced Intel technology. Optimized use of multi-core processors allows consolidation of your security solutions without a performance trade-off.

With faster than ever firewall, IPS and VPN throughput, our SG Series appliances effortlessly handle multiple tasks simultaneously. Plus, you can easily scale up by dynamically clustering up to 10 units without external load balancers.

## Responsive

### Technology built to process data in real-time

Your network is constantly changing so your protection needs to be adaptive. All our appliances have integrated high-speed hard drives (in many cases SSDs) for local storage of spam quarantine data and faster access to comprehensive reports and real-time logs.

Accelerated in-memory content scanning in secure proxy mode makes your defenses more effective and efficient.

## Reliable

### Engineered for business – today and tomorrow

Using the latest Intel technology, our products provide the maximum in flexibility to add to your protection as you need it - without changing or upgrading your hardware. So you benefit from future software and performance enhancements which guarantee the best possible value for your money.

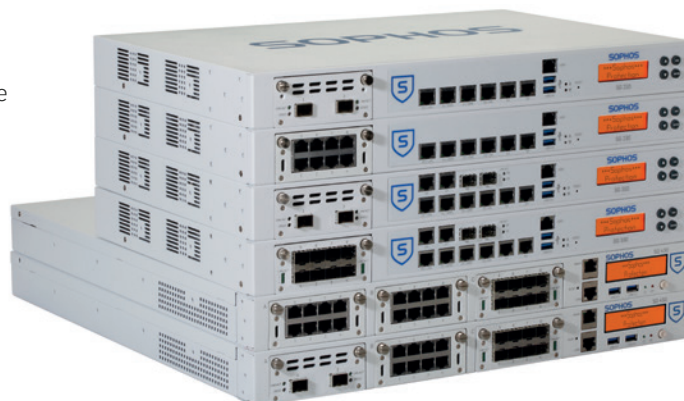
Our SG 450 offers unmatched enterprise-grade features for high-availability on a 1U rack-mountable appliance.

## Modular

### Flexible configuration options on many models

Configure your hardware to suit your infrastructure, even when that changes. Our optional FleXi Port LAN modules give you the freedom to select the connectivity you need – copper, fiber, 10GbE – you decide.

And because they're fully interchangeable between the mid-range models, if you do choose to upgrade to a larger appliance, you simply swap your old appliance's module to the new one.



# Key Features

The Sophos SG Series appliances offer many features that make your network protection easier to manage and simpler to deploy.

## Intel technology inside

- Our hardware uses the latest Intel technology to provide the best performance and ensure the optimal use of resources.
- By using standard Intel technology rather than customized hardware chips, our appliances are easy to upgrade and benefit from future software enhancements. That gives you greater flexibility and value for your money.

## Solid State Drives – fast access, low impact

- Solid State Drives, or SSDs, provide faster data storage without the performance impact of rotating drives. Whether you're scanning large volumes of emails, or generating highly complex reports, they allow you to get more done faster.
- As there are no moving parts, they provide a reliable high-capacity solution for your network with all functionality on the box, rather than requiring a separate appliance.

## FleXi Ports – customize your connectivity

- FleXi Port modules let you tailor your security appliance to fit your network connectivity needs.
- On our SG 2xx, 3xx and 4xx appliances, you can select additional modules with copper and 1/10 GbE fiber interfaces to easily expand and upgrade your hardware.
- They're fully interchangeable between models, so if your business grows and you upgrade, you can simply take the module you've already purchased and slot it into your new appliance – for example, going from an SG 210 to an SG 330.

## LCD Display – everything in view

- The multi-function LCD display allows you to quickly check the status and do basic administrative tasks directly on the appliance.
- You can directly connect a monitor using the built-in VGA port.

8 port GE copper FleXi Port module



8 port GE SFP FleXi Port module



2 port 10 GE SFP+ FleXi Port module



LCD Display



# SG Series Appliances - Medium

The Sophos SG Series offers you a choice of six appliances for mid-sized enterprises.

Your Sophos partner or sales contact will be happy to provide a recommendation for the most suitable appliance based upon your individual requirements, infrastructure and user environment. The following are general recommendations only.

## SG 210, SG 230

Ideal for branch offices and small- to medium-sized environments



## SG 310, SG 330

Ideal for distributed organizations and growing medium-sized environments



## SG 430, SG 450

Ideal for medium-sized and distributed organizations looking for enterprise performance and reliability

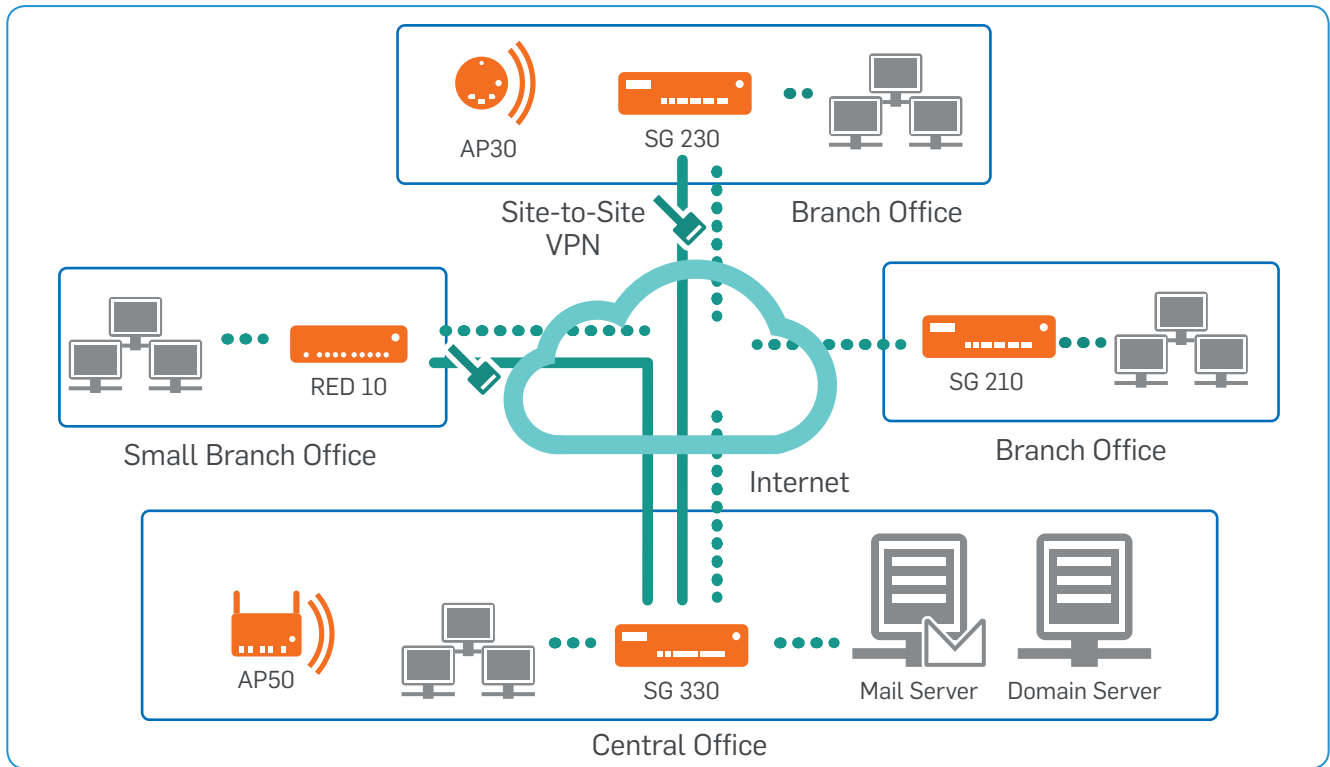


## Unrivalled performance, unmatched flexibility

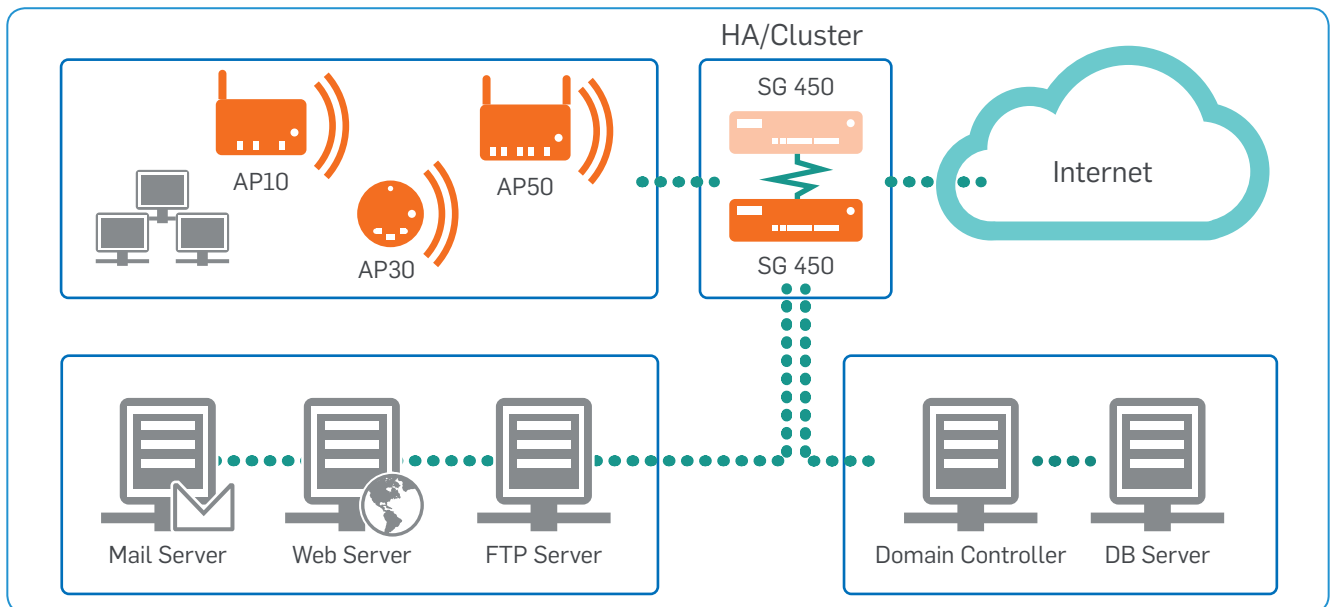
- › All of these appliances provide outstanding performance guaranteed to minimize latency on your network.
- › Engineered to effortlessly handle multi-layered security, you get best-of-breed throughput unrivalled in this 1U class.
- › Over 10 Gbit/sec firewall throughput on every model.
- › Configure your chosen appliance with the connectivity you need using our FleXi Port modules. With options for copper and 1/10 GbE fiber interfaces, you can select the module that suits your requirements. All modules are fully interchangeable between appliances in this range.

# SG Series Appliances - Medium

Whatever your deployment scenario, these appliances can handle multiple security solutions in every situation. The following diagrams show typical deployments in this range.



Scenario using SG Series appliances and RED for branch offices

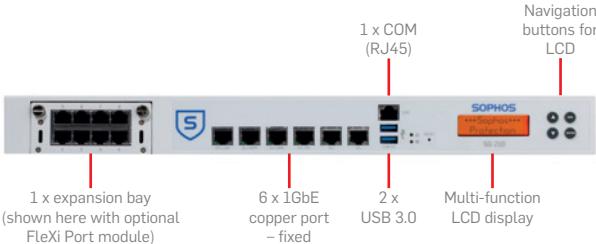
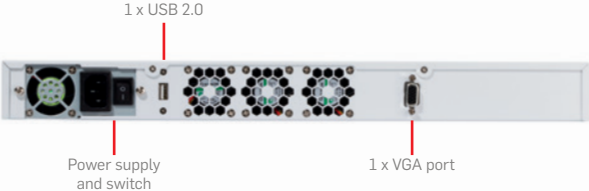


Deployment scenario with cluster of two SG 450 appliances

# SG Series Appliances: SG 210, SG 230

## Technical Specifications

The Sophos SG 210 and SG 230 are designed to protect small to mid-sized businesses and branch offices. Based on the latest Intel technology and equipped with 6 GbE copper ports plus one FleXi Port slot to configure with an optional module, they provide high flexibility and throughput at an excellent price-to-performance ratio. As with all models, you can dynamically cluster up to 10 of these appliances.

Front View	Performance	SG 210	SG 230
 <p>1 x expansion bay (shown here with optional FleXi Port module)</p> <p>6 x 1GbE copper port – fixed</p> <p>2 x USB 3.0</p> <p>1 x COM (RJ45)</p> <p>Multi-function LCD display</p> <p>Navigation buttons for LCD</p>	<b>Firewall throughput</b>	11 Gbps	13 Gbps
	<b>VPN throughput</b>	1 Gbps	2 Gbps
	<b>IPS throughput</b>	2 Gbps	3 Gbps
	<b>Antivirus throughput (proxy)</b>	500 Mbps	800 Mbps
	<b>Concurrent connections</b>	2,000,000	2,500,000
	<b>New connections/sec</b>	20,000	22,000
	<b>Maximum licensed users</b>	unrestricted	unrestricted
Back View	Physical interfaces		
 <p>1 x USB 2.0</p> <p>Power supply and switch</p> <p>1 x VGA port</p>	<b>Hard drive (local quarantine/logs)</b>	integrated HDD	integrated SSD
	<b>Ethernet interfaces (fixed)</b>	6 GE copper	6 GE copper
	<b>No. of FleXi Port slots</b>	1	1
	<b>FleXi Port modules (optional)</b>	8 port GE copper 8 port GE SFP 2 port 10 GE SFP+	8 port GE copper 8 port GE SFP 2 port 10 GE SFP+
	<b>I/O ports</b>	2 x USB 3.0 (front) 1 x USB 2.0 (rear) 1 x COM (RJ45) (front) 1 x VGA (rear)	2 x USB 3.0 (front) 1 x USB 2.0 (rear) 1 x COM (RJ45) (front) 1 x VGA (rear)
	<b>Display</b>	Multi-function LCD module	Multi-function LCD module
	<b>Power supply</b>	Internal auto-ranging 110-250VAC, 48-62 Hz	Internal auto-ranging 110-250VAC, 48-62 Hz

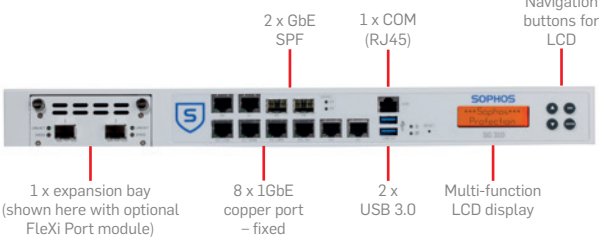
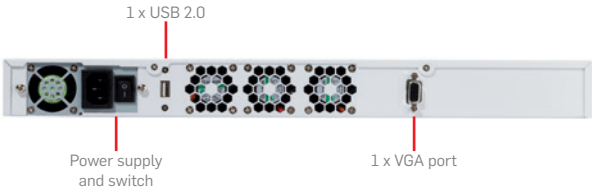
Physical specifications		Environment	
<b>Mounting</b>	1U rack mount (2 rackmount ears included)	<b>Power consumption</b>	52W, 180 BTU/hr, 0.61A@110V (idle), 78W, 266 BTU/hr, 0.87A@110V (full load)
<b>Dimensions Width x Depth x Height</b>	438 x 292 x 44mm 17.24 x 11.5 x 1.75 inches	<b>Operating temperature</b>	0-40°C (operating) -20 to +80°C (storage)
<b>Weight</b>	5.1 Kg / 11.24 lbs (unpacked) 7.05 Kg / 15.54 lbs (packed)	<b>Humidity</b>	10%-90%, non-condensing

Safety Certifications	
<b>Certifications</b>	CE, FCC Class A, CB, VCCI, C-Tick, UL

# SG Series Appliances: SG 310, SG 330

## Technical Specifications

The Sophos SG 310 and SG 330 are scalable appliances suitable for many distributed organizations or growing mid-sized companies. With solid-state drives for on-box reporting, logs and spam quarantine, they're highly responsive even in high traffic environments. Each model is equipped with 8 GbE copper ports, 2 GbE SFP fiber ports plus one FleXi Port slot to configure with an optional module. They provide optimal performance and flexibility.

Front View	Performance	SG 310	SG 330
 <p>1 x expansion bay (shown here with optional FleXi Port module)</p> <p>8 x 1GbE copper port – fixed</p> <p>2 x GbE SPF</p> <p>1 x COM (RJ45)</p> <p>2 x USB 3.0</p> <p>Multi-function LCD display</p> <p>Navigation buttons for LCD</p>	<b>Firewall throughput</b>	17 Gbps	20 Gbps
	<b>VPN throughput</b>	3 Gbps	4 Gbps
	<b>IPS throughput</b>	5 Gbps	6 Gbps
	<b>Antivirus throughput (proxy)</b>	1.2 Gbps	1.5 Gbps
	<b>Concurrent connections</b>	3,200,000	3,500,000
	<b>New connections/sec</b>	50,000	70,000
	<b>Maximum licensed users</b>	unrestricted	unrestricted
Back View	Physical interfaces		
 <p>1 x USB 2.0</p> <p>Power supply and switch</p> <p>1 x VGA port</p>	<b>Hard drive (local quarantine/logs)</b>	integrated SSD	integrated SSD
	<b>Ethernet interfaces (fixed)</b>	8 GE copper 2 GE SFP	8 GE copper 2 GE SFP
	<b>No. of FleXi Port slots</b>	1	1
	<b>FleXi Port modules (optional)</b>	8 port GE copper 8 port GE SFP 2 port 10 GE SFP+	8 port GE copper 8 port GE SFP 2 port 10 GE SFP+
	<b>I/O ports</b>	2 x USB 3.0 (front) 1 x USB 2.0 (rear) 1 x COM (RJ45) (front) 1 x VGA (rear)	2 x USB 3.0 (front) 1 x USB 2.0 (rear) 1 x COM (RJ45) (front) 1 x VGA (rear)
	<b>Display</b>	Multi-function LCD module	Multi-function LCD module
	<b>Power supply</b>	Internal auto-ranging 110-250VAC, 48-62 Hz	Internal auto-ranging 110-250VAC, 48-62 Hz

Physical specifications		Environment	
<b>Mounting</b>	1U rack mount (2 rackmount ears included)	<b>Power consumption</b>	27W, 92 BTU/hr, 0.47A@110V (idle), 69W, 235 BTU/hr, 0.97A@110V (full load)
<b>Dimensions Width x Depth x Height</b>	438 x 292 x 44mm 17.24 x 11.5 x 1.75 inches	<b>Operating temperature</b>	0-40°C (operating) -20 to +80°C (storage)
<b>Weight</b>	5.1 Kg / 11.24 lbs (unpacked) 7.05 Kg / 15.54 lbs (packed)	<b>Humidity</b>	10%-90%, non-condensing

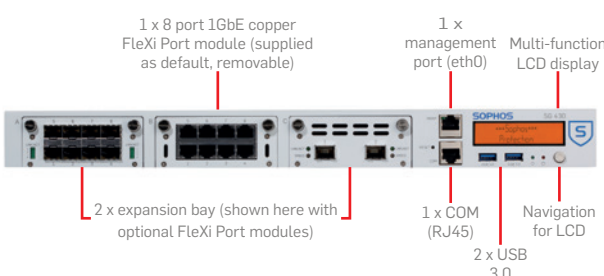

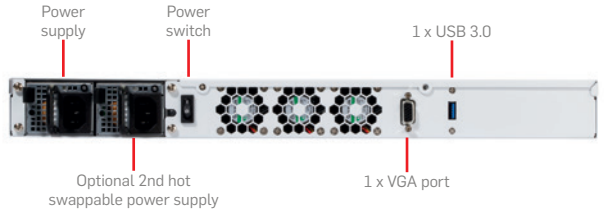
Safety Certifications	
<b>Certifications</b>	CE, FCC Class A, CB, VCCI, C-Tick, UL



# SG Series Appliances: SG 430, SG 450

## Technical Specifications

The Sophos SG 430 and SG 450 offer enterprise performance for distributed organizations or larger mid-sized companies. The connectivity options are second to none for rack mountable appliances, with each model coming equipped with a removable 8 GbE copper port module and 2 additional FleXi Port slots which you can configure with your choice of optional modules. For high-availability, the SG 450 also offers unparalleled redundancy features in a 1U appliance with a second SSD (RAID) integrated and an optional second power supply available.

Front View	Performance	SG 430	SG 450
	<b>Firewall throughput</b>	25 Gbps	27 Gbps
	<b>VPN throughput</b>	4 Gbps	5 Gbps
	<b>IPS throughput</b>	7 Gbps	8 Gbps
	<b>Antivirus throughput (proxy)</b>	2 Gbps	2.5 Gbps
	<b>Concurrent connections</b>	4,000,000	5,000,000
	<b>New connections/sec</b>	100,000	190,000
	<b>Maximum licensed users</b>	unrestricted	unrestricted
Back View SG 430	Physical interfaces		
	<b>Hard drive (local quarantine/logs)</b>	integrated SSD	integrated SSD x2
	<b>Ethernet interfaces (fixed)</b>	8 GE copper	8 GE copper
	<b>No. of FleXi Port slots</b>	3 (1 included)	3 (1 included)
	<b>FleXi Port modules (optional)</b>	8 port GE copper 8 port GE SFP 2 port 10 GE SFP+	8 port GE copper 8 port GE SFP 2 port 10 GE SFP+
	<b>I/O ports</b>	2 x USB 3.0 (front) 1 x USB 2.0 (rear) 1 x COM (RJ45) (front) 1 x VGA (rear)	2 x USB 3.0 (front) 1 x USB 2.0 (rear) 1 x COM (RJ45) (front) 1 x VGA (rear)
	<b>Display</b>	Multi-function LCD module	Multi-function LCD module
	<b>Power supply</b>	Internal auto-ranging 110-250VAC, 48-62 Hz	Internal auto-ranging 110-250VAC, 48-62 Hz  Hot Swap Redundant PSU optional

Physical specifications		Environment	
<b>Mounting</b>	1U rack mount (kit included)	<b>Power consumption</b>	22W, 74 BTU/hr, 0.56A@110V (idle), 125W, 429 BTU/hr, 1.48A@110V (full load)
<b>Dimensions Width x Depth x Height</b>	438 x 483 x 44mm 17.24 x 19 x 1.75 inches	<b>Operating temperature</b>	0-40°C (operating) -20 to +80°C (storage)
<b>Weight</b>	9.5 Kg / 20.94 lbs (unpacked) 12.3 Kg / 27.11 lbs (packed)	<b>Humidity</b>	10%-90%, non-condensing

Safety Certifications	
<b>Certifications</b>	CE, FCC Class A, CB, VCCI, C-Tick, UL



# Choose your license

We give you the flexibility to license our protection modules individually. Or, you can choose one of our pre-packaged licenses. Whatever suits your needs.

	Individual subscriptions	BasicGuard	FullGuard
<b>Modules - Choose the ones you need</b>	Try It For Free	Try It For Free	Try It For Free
<b>Essential Firewall - Free</b> Network Firewall, NAT, Native Windows Remote Access	Yes	Full	Full
<b>Network Protection</b> IPSec/SSL, ATP, VPN, IPS, DoS Protection	Yes	Basic	Full
<b>Web Protection</b> URL Filtering, Application Control, Dual Engine Antivirus	Yes	Basic	Full
<b>Email Protection</b> Anti-spam, Email Encryption and DLP, Dual Engine Antivirus	Yes	Basic	Full
<b>Wireless Protection</b> Wireless Controller, Multi-SSID Support, Captive Portal	Yes	Basic	Full
<b>Webserver Protection</b> Web Application Firewall, Reverse Proxy, Antivirus	Yes	-	Full
<b>Endpoint Protection</b> Antivirus, HIPS, Device Control	Yes	Optional	Optional

## TotalProtect Bundles: All-in-one protection

Our TotalProtect bundles combine hardware with all the network security you need - all in a single order number. These bundles include:

- An SG Series appliance of your choice
- FullGuard subscription
- Support (may vary by region)

## Extend your security

**Sophos RED** Simply secures your branch offices by forwarding all traffic to the central Sophos UTM. Installation requires no technical training and there is no ongoing maintenance.

**Wi-Fi Access Points** Configurationless access points are instantly protected by the UTM, letting you create secure mesh networks.

**VPN Clients** Secure SSL or IPsec VPNs provide mobile and home workers with secure remote access from any location at any time.

**Free UTM Manager** Centrally manages multiple UTM devices through IPsec VPN tunnels; deploys policies in just a few clicks.

## Sophos UTM Certifications



United Kingdom and Worldwide Sales  
Tel: +44 (0)8447 671131  
Email: [sales@sophos.com](mailto:sales@sophos.com)

North American Sales  
Toll Free: 1-866-866-2802  
Email: [nasales@sophos.com](mailto:nasales@sophos.com)

Try it now for free

Register for a free 30-day evaluation  
at [sophos.com/try-utm](http://sophos.com/try-utm)

Australia and New Zealand Sales  
Tel: +61 2 9409 9100  
Email: [sales@sophos.com.au](mailto:sales@sophos.com.au)

Asia Sales  
Tel: +65 62244168  
Email: [salesasia@sophos.com](mailto:salesasia@sophos.com)

Oxford, UK | Boston, USA  
© Copyright 2014, Sophos Ltd. All rights reserved.  
Registered in England and Wales No. 2096520, The Pentagon, Abingdon Science Park, Abingdon, OX14 3YP, UK  
Sophos is the registered trademark of Sophos Ltd. All other product and company names mentioned are trademarks or registered trademarks of their respective owners.

1140.03.13DD.dsna.simple

**SOPHOS**